

ConTouch

Touch Screen Software for Microsoft DOS Installation Manual

Revision 2.0

ConTouch Co.

www.contouch.com

PREFACE

Thank you for choosing our RS232, Surface Acoustic Wave touch screen products!

This software is the driver package of ConTouch surface acoustic wave touch screen for Microsoft DOS, and this manual contains additional notes about our touch screen software. We hope it will help you to make better use of our touch screen and its software.

CONTENTS

- 1. Install touch screen software**
- 2. Set touch screen configuration**
- 3. Uninstall touch screen software**
- 4. Software component**

1. Install touch screen software

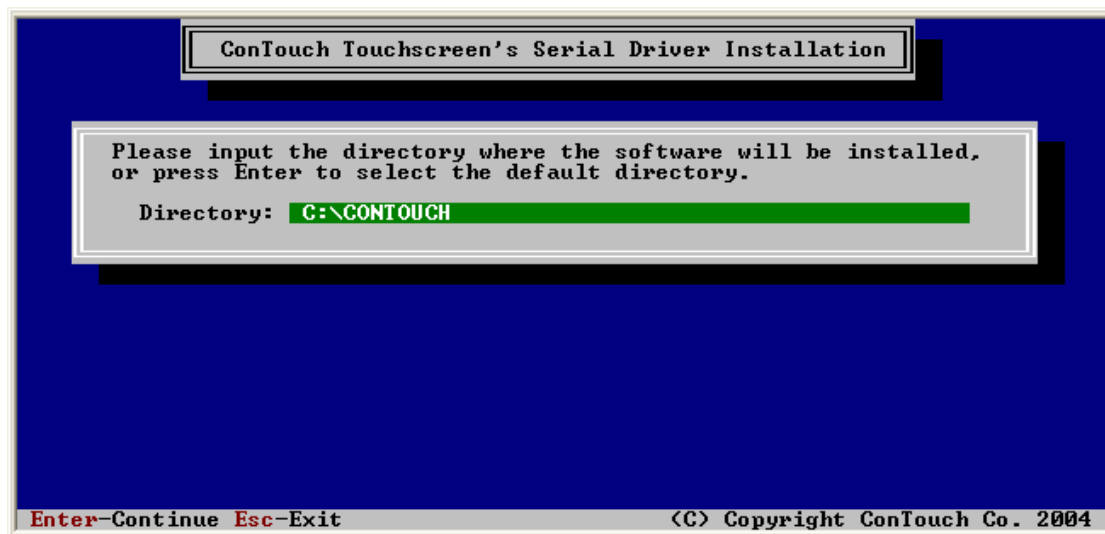
Do the following to install your touch screen and its software:

- 1> Turn off your computer.
- 2> Install your touch screen hardware.
- 3> Turn on your computer.
- 4> Insert the installation floppy disk, which is labeled "ConTouch SAW touch screen driver version 2.0 for MS-DOS ".

Then execute the following command:

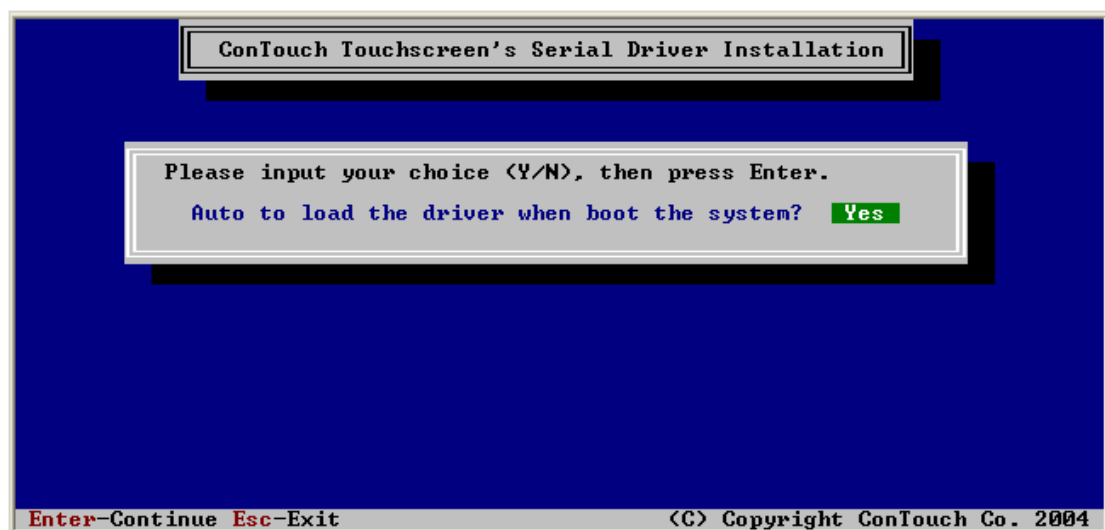
A>CTINST<Enter>

You can look at the installation interface as follow:



Here you can input the installation directory or press "Enter" to select the default one.

The installation program may modify your AUTOEXEC.BAT automatically so that the driver can be loaded automatically when your computer turns on.



Now the ConTouch touch screen software is installed in the selected directory.

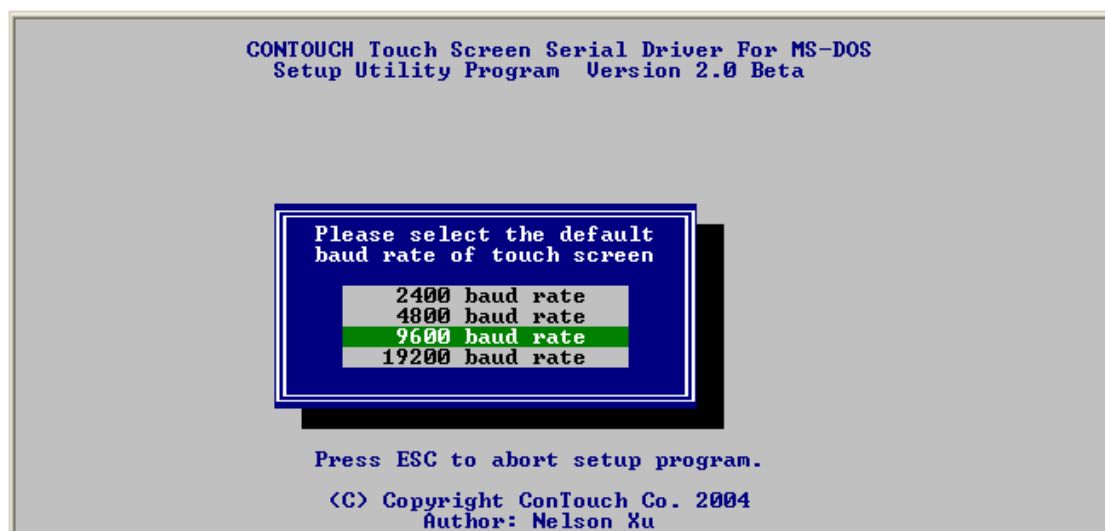
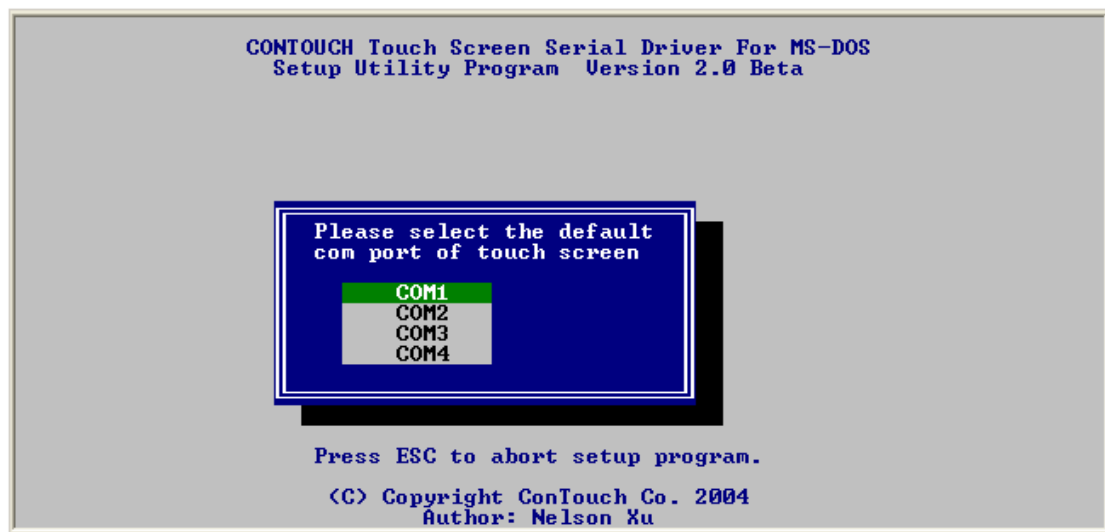
2. Set touch screen configuration

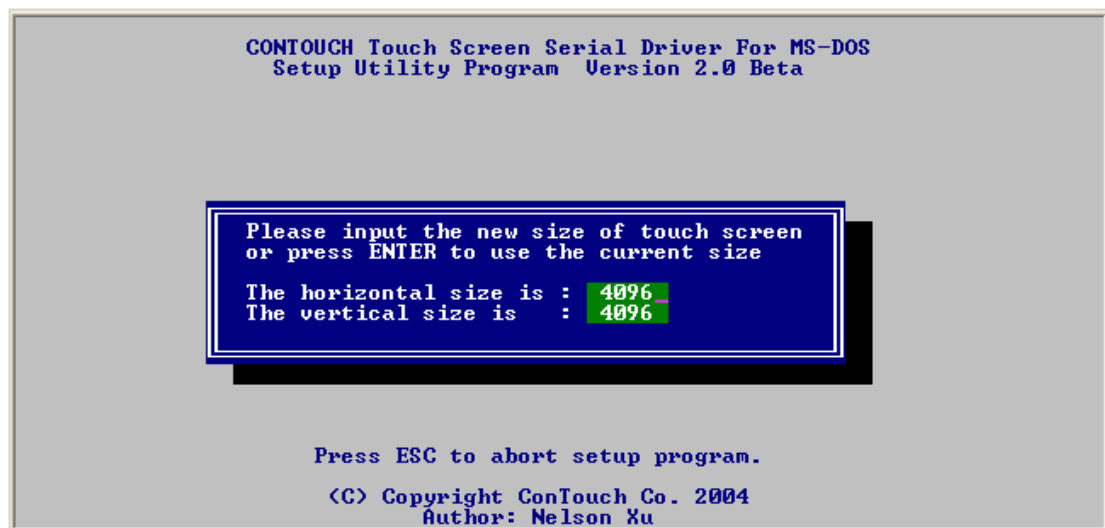
The setup program will run automatically after the installation finishes, or you can run CTSEUP.EXE at the DOS prompt later.

In this program, you can select serial port, baud rate, size of the touch screen, emulation mouse mode and mouse button mode, and also calibrate the touch screen.

The configuration data will be stored in the file CONTOUCH.CFG.

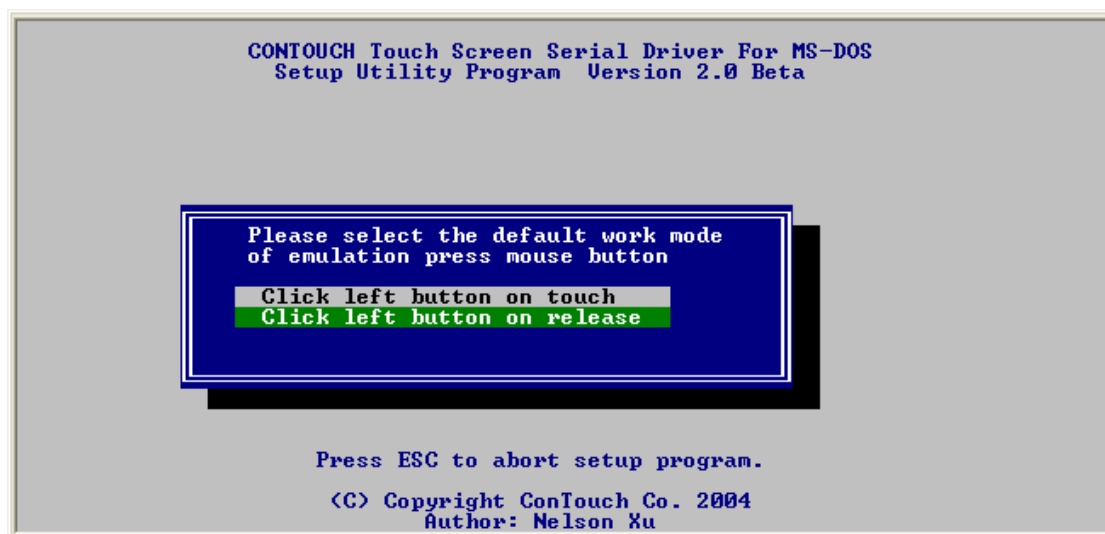
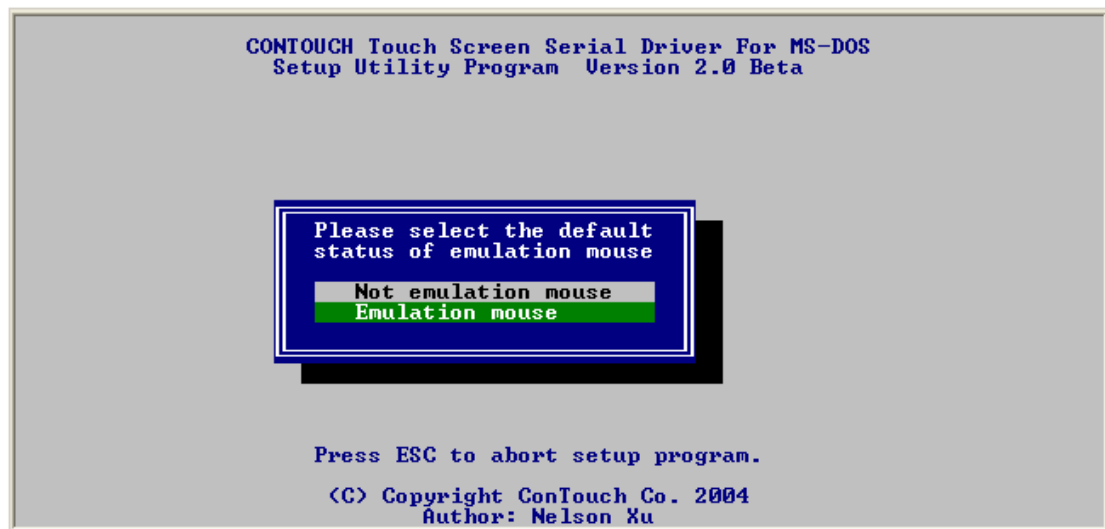
The followings are the setup interfaces:

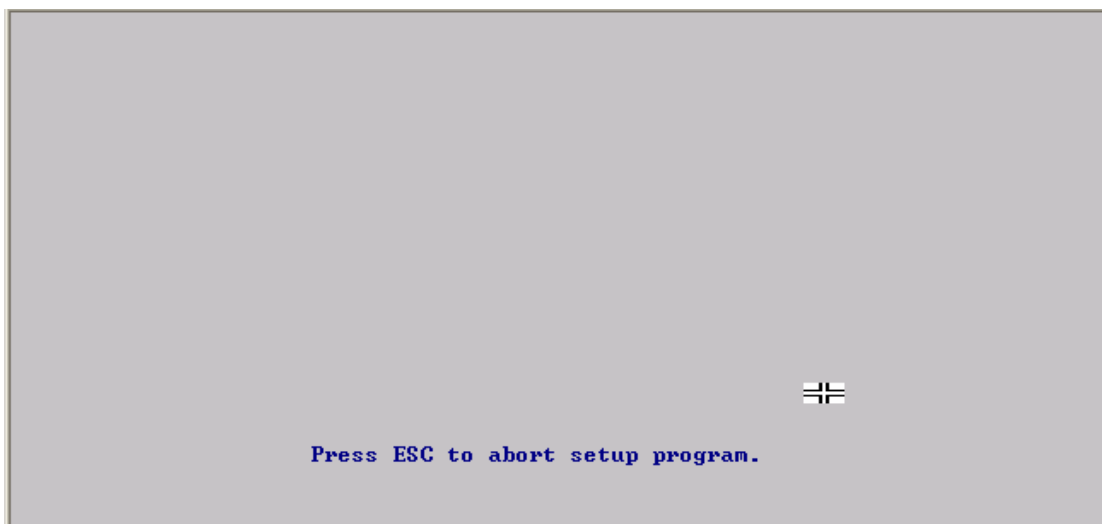




The range of the horizontal size is from 0 to 4096;

The range of the vertical size is from 0 to 4096;





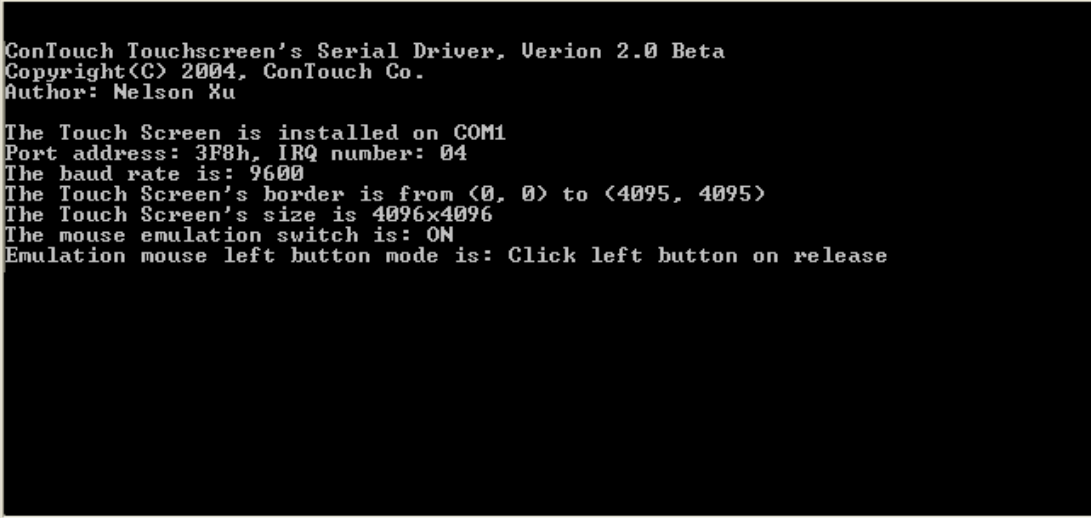
Alternatively, you can run CONTOUCH.COM with command options. The command options are described below:

Usage: CONTOUCH [option]

Option is:

- /cx communication port no., maybe: x = 1, 2, 3 or 4
- /bxxxx baud rate of communication, maybe: xxxx = 2400, 4800, 9600 or 19200
- /dX,Y Set Touch Screen's border to (X, Y)
 X is maximum horizontal position (0 – 4096)
 Y is maximum vertical position (0 – 4096)
- /m+ Enable mouse emulation function
- /m- Disable mouse emulation function
- /l1 Click left button on touch
- /l2 Click left button on release
- /l3 Drag
- /r Remove driver from RAM
- /s Save setting to configuration file.

When the driver is loaded, these configuration data will be showed on the monitor as follow:



```
ConTouch Touchscreen's Serial Driver, Verion 2.0 Beta
Copyright(C) 2004, ConTouch Co.
Author: Nelson Xu

The Touch Screen is installed on COM1
Port address: 3F8h, IRQ number: 04
The baud rate is: 9600
The Touch Screen's border is from (0, 0) to (4095, 4095)
The Touch Screen's size is 4096x4096
The mouse emulation switch is: ON
Emulation mouse left button mode is: Click left button on release
```

3. Uninstall touch screen software

- 1> Return to the MS-DOS prompt.
- 2> Execute the following command:
C>CONTOUCH /r <Enter> or CONTOUCH /R<Enter>

4. Software component

Our touch screen software is composed of the following programs:

CTINST.EXE	Installation program of ConTouch touch screen driver for Microsoft DOS.
INSTALL.INF	Installation information file that the installation program needs, which includes the information of installation.
CTSETUP.EXE	Setup program of ConTouch touch screen, it will setup the configuration of the driver, such as serial port, baud rate and emulation mode, etc. It also includes the calibration function.
CONTOUCH.COM	The driver of ConTouch touch screen, which provides the interface between the touch screen and application programs
CONTOUCH.CFG	The configuration file of the touch screen driver.
CTMANUAL.doc	It's me!

**Copyright 2004 ConTouch Co.
All rights reserved.**

April, 2004 By Nelson Xu